

## Policy of Alternate Sources of Energy

### **Introduction:**

Kisan Veer Mahavidyalaya, Wai's energy usage policy aims to manage energy in a methodical manner to reduce its environmental impact. The strategy suggests looking into renewable energy sources to lessen the load on the government and to identify alternative natural resources that can be used to address the energy crisis.

### **Objectives:**

- To evaluate energy usage and quantify its environmental impact
- To fit photovoltaic solar panels to generate alternative energy.
- To install LED lamps throughout the campus to save electricity.
- To provide guidance and education on energy-saving strategies.

### **The Scope of Policy:**

The institution's energy policy is binding on all of its stakeholders and covers all the activities the institution engages. It assists us in accomplishment of our obligations and committing to the protection and responsible use of natural resources by integrating efficiency and environmental consciousness into our daily operations. Students and staff will be informed about this policy through internal communication channels. The college principal will oversee the frequent reviews of the energy policy, objectives, and targets.

### **Measures for Energy Conservation:**

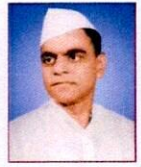
- Employing an LED light bulb



Janata Shikshan Sanstha's

# KISAN VEER MAHAVIDYALAYA, WAI

Internal Quality Assurance Cell (IQAC)



- Turn off the lights, fans, and other electrical equipment's when not required.
- Best possible use of the energy produced by solar panels
- Turn off computers after work when you leave your table.
- Use fans and air conditioning only when needed.

Coordinator

Internal Quality Assurance Cell  
Kisan Veer Mahavidyalaya, Wai  
Tal. Wai, Dist. Satara



Principal

Kisan Veer Mahavidyalaya, Wai  
Tal. Wai, Dist. Satara